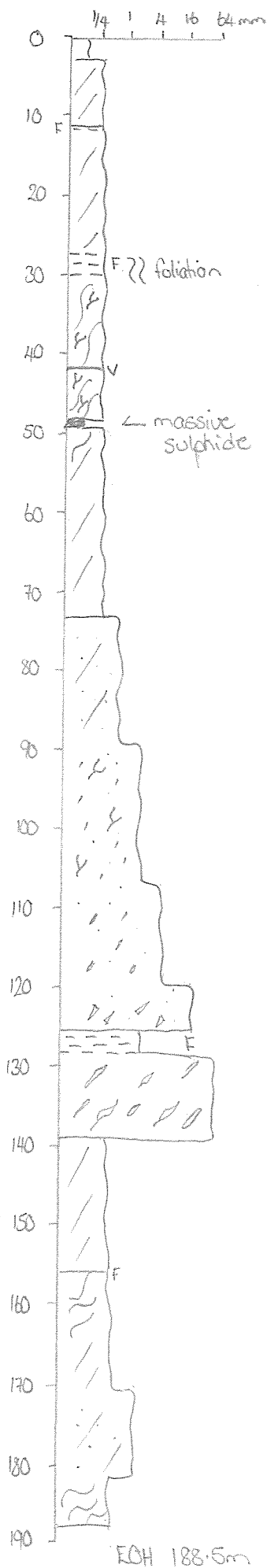


Summary Log - Sterling Valley - Bruce Creek - JDH BCD04



0-11.5m Strongly cleaved black shale

12.3-26.1 Farrell Slates - includes 5cm galena rich vein @ 24.3m

26.1-29m Mineralized fault zone 1-3% pyrite-pyrrhotite; trace sp, gn.

29-46.95 Mineralized Farrell Slates

5% pyrite, 1-2% pyrrhotite, 2% arsenopyrite, 1% chalcopyrite

46.95-47.7 Semi massive sulphide - 40%+ pyrite, 15%+ arsenopyrite.

47.7-71.9 Farrell slates - trace py, po.

71.9-126.1 Farrell sequence

Silty to pebbly fsp-qz + lithic volcanoclastics

trace py, po, aspy

126.1-127.6 Fault Zone.

127.6-139.1 Volcanoclastic conglomerate.

fsp-qz xtal rich with attenuated shale clasts (wispy? pumice)

139.1-188.5 Farrell Slates

Black shale-slate sequence with interbedded intervals of volcanoclastic sandstone

trace py, po, aspy.

EOH 188.5m



DIVERSIFIED MINERALS PTY LTD

PAGE 1 OF 7

Hole No. BCD04

Collar Location

Graphical Drill Hole Log

Logged by MB

Massive

Project : EL 34/2010

East : 384385.00

Azimuth setup : 100 degrees MAG (~ GRID E) * Mag anomaly on site

Drilled by Wholecore

Pervasive

Prospect : Bruce Creek

North : 5373400.00

Declination : -55 degrees

Drill type Cortech CSD1800

Disseminated

Grid : GDA94

RL : 190 (DTM)

Total Depth : 188.5m

Drill Date 1/11/18

Narrow vein

Proj. GDA94

Collar survey: GPS Pickup 3m accuracy

0.002 1/4 1 4 16 64 mm

From To		Colour/ Weathering	Structure type 1	Structure type 2	Angle CA	Graphic structure	Log grain size	Description	Alteration						Mineralization				
									Silica	Sericite	Albite	Carbonate	Chlorite	Hematite	Vein Qtz %	Mineralisation Assemblage	%	Vein	Pervasive
0	1							0-2.4 m.											
1	2							weathered shale, surficial gravel,											
2	3							clay.											
3	4							2.4-11.5											
4	5							v. strongly cleaved, broken black											
5	6							shale/slate.								1-2% fine			
6	7							1-2% disseminated fine pyrite.								py.			
7	8																		
8	9																		
9	10							11.5-12.3 Fault zone.											
10	11							sheared shale + 10cm pug @ 11.5m											
11	12																		
12	13							12.3-26.1. Fault Slates.											
13	14							black shale/slates with moderate											
14	15							foliation // carbonate veining											
15	16							includes 5cm carb-galena-pyrite-											
16	17							pyrite vein @ 24.3m. + 10cm											
17	18							similar ven @ 25.4m.											
18	19																		
19	20																		
20	21																		
21	22																		
22	23																		
23	24																		
24	25							26.1-29 mineralized fault zone.											
25	26							mineralized, faulted zone in											
26	27							black shale. pugs @ 26.8-26.9,											
27	28							28.5-28.6, 28.9-30											
28	29							strong yellow cream carbonate -											
29	30							qz veining with pyrite-pyrrhotite											

Samples

#	From	To
01	16	17m
2	18	
	19	
	20	
	21	
06	21	22m

From To

07 22 23

10 25 26.1m

From To

11 26.1 27

14 28.4 29m

From To

15 29 30

31

32

32.9

33.25

34 33.75 34.1

+ Aspy + Galena + cpy. 10% Veins
1m - 20cm



Hole No. BCD04

Project : EL 34/2010
Prospect : Bruce Creek
Grid : GDA94

Collar Location

East : 384385.00
North : 5373400.00
RL : 190 (DTM)
Proj.

Graphical Drill Hole Log

Azimuth setup : 100 degrees MAG (~ GRID E) * Mag anomaly on site
Declination : -55 degrees
Total Depth : 188.5m
Collar survey: GPS Pickup 3m accuracy

Logged by MB

Drilled by Wholecore
Drill type Cortech CSD1800
Drill Date 1/11/18Massive
Pervasive
Disseminated
Narrow vein

0 0.02 1/4 1 4 16 64 mm

0002 1/4 1 4 16 64 mm								Alteration					Mineralization							
From	To	Colour/ Weathering	Structure type 1	Structure type 2	Angle CA	Graphic structure	Log grainsize	Description	Silica	Sericite	Albite	Carbonate	Chlorite	Hematite	Vein Qtz %	Mineralisation Assemblage	%	Veining	Dissem.	Pervasive
30	31							29-42.45 Mineralized black shale	/		/	/								
31	32							zone of strong vein mineralization	/		/	/								
32	33							in black shale with disrupted	/		/	/				5% py				
33	34							bedding/cleavage	/		/	/				1-2% po				
34	35								/		/	/				2% Aspy				
35	36							10%-15% veins of carb-qz-chlorite-	/		/	/				1% cpy				
36	37							pyrite - pyrrhotite, aspy, cpy +	/		/	/								
37	38							trace gn.	/		/	/								
38	39								/		/	/								
39	40							mineralization is in foliation	/		/	/								
40	41							parallel veins in shale, but	/		/	/								
41	42							also stockwork veining in brecciated	/		/	/								
42	43							silicified zones/qz veins.	/		/	/								
43	44								/		/	/								
44	45							42.45-43.35 Veins - trace sulphides	/		/	/								
45	46							60% qz + chlorite altered shale	/		/	/								
46	47							43.35-46.95 Altered shales	/		/	/								
47	48							light grey silicified shales (si-chl-cb alt)	/		/	/								
48	49							minor py-po-asp vein	/		/	/								
49	50								/		/	/								
50	51							46.95-47.7 SEMI MASSIVE SULPHIDE	/		/	/								
51	52							vein breccia textured granular massive	/		/	/				40%+ py				
52	53							pyritic + carbonate with crystalline	/		/	/				15% Aspy				
53	54							Aspy + amorphous chlorite 60%	/		/	/								
54	55							sulphides - minor cpy	/		/	/								
55	56							appears to be alteration banded	/		/	/								
56	57								/		/	/								
57	58							47.7-49 - grey altered black shale as	/		/	/								
58	59							at 43.35m	/		/	/								
59	60							brecciated + vuggy from 48.5m.	/		/	/								

Samples.

#	From	To	#	From	To	#	From	To	#	From	To
21	34m	35m	27	39	39.6	35	46m	46.7	43	53m	54m
		36			40.8			47.7			55
		36.9			41.9			48.4			56
		37.3			42.5			49			57
		38.25			43			50			58
					44			51	48	58	59
26	38.25m	39m	# 34	4.5m	4.5	42	52m	53m			



Hole No. BCD04

Project: EL 34/2010

Prospect: Bruce Creek

Grid: GDA94

Collar Location

East: 384385.00

North: 5373400.00

RL: 190 (DTM)

Proj.

Graphical Drill Hole Log

Azimuth setup: 100 degrees MAG (~ GRID E) * Mag anomaly on site

Declination: -55 degrees

Total Depth: 188.5m

Collar survey: GPS Pickup 3m accuracy

Logged by MB

Drilled by Wholecore

Drill type Cortech CSD1800

Drill Date 1/11/18

Massive

Pervasive

Disseminated

Narrow vein



0.002 1/4 1 4 16 64 mm								Alteration						Mineralization										
From	To	Colour/ Weathering	Structure type 1	Structure type 2	Angle CA	Graphic structure	Log grain size	Description	Silica	Sericite	Albite	Carbonate	Chlorite	Hematite	Vein Qtz %	Mineralisation Assemblage	%	Veining	Dissem	Pervasive				
60	61	fold hinge facing 1						49-71.9 Farrell Slates	/x															
61	62							folded black shale sequence.	/															
62	63							probable isoclinal folds with	/															
63	64							strong qtz-cb veining around	//															
64	65	folded qtz vein.						hinges with swinging foliation																
65	66																							
66	67	moderate qtz-cb veining - mostly						/																
67	68	foliation parallel.						/																
68	69	x 45° foliation + bedding.							/															
69	70																							
70	71																							
71	72																							
72	73	25-35° foliation						71.9-126.1 Farrell Sequence.																
73	74							cream grey silty to fine sandy																
74	75							fsp-qz. xtal + lithic fragment bearing																
75	76							volcaniclastic sandstones with																
76	77	x 25-35° foliation						ashy matrix.																
77	78																							
78	79							relatively weak matrix carbonate																
79	80							alteration + weak qz-cb-sulphide																
80	81	80.9 HQ → NO reduction.	x 45° CLEAN bedding 70°					2x cleavage veining																
81	82																							
82	83	moderately foliated																						
83	84	bedding may represent bedding @70°/NCA.																						
84	85	x 45° CLEAN bedding 70°						87 - 100m. Weak thin veined Volcaniclastic <u>seq.</u>																
85	86																							
86	87							colour change - cream changing	/															
87	88							to dk grey + moderate qz-cb-	/															
88	89							sulphide veining + chlorite.	/															
89	90																							

Samples

#	From	To	#	From	To
49	81m	82m	55	87m	88m
50		83			89
51		84			90
52		85			91
53		86			92
54	86m	87m			93
			61	93m	94m



Hole No. BCD04

Project : EL 34/2010
Prospect : Bruce Creek
Grid : GDA94

Collar Location

East : 384385.00
North : 5373400.00
RL : 190 (DTM)
Proj.

Graphical Drill Hole Log

Azimuth setup : 100 degrees MAG (~ GRID E) * Mag anomaly on site
Declination : -55 degrees
Total Depth : 188.5m
Collar survey: GPS Pickup 3m accuracy

Logged by MB

Drilled by Wholecore
Drill type Cortech CSD1800
Drill Date 1/11/18Massive
Pervasive
Disseminated
Narrow vein

0.032 1/4 1 4 16 64 mm

From	To	Colour/ Weathering	Structure type 1	Structure type 2	Angle CA	Graphic structure	Log grain size	Description	Alteration						Mineralization				
									Silica	Sericite	Albite	Carbonate	Chlorite	Hematite	Vein Qtz %	Mineralisation Assemblage	%	Vein	Pervasive
90	91								/			/							
91	92								/			/							
92	93								/			/							
93	94							← sulphide veining @ 20, 30, 45°/vca. ←	/			/				21% py-aspv in veins.			
94	95							←	/			/							
95	96							←	/			/							
96	97							←	/			/							
97	98							←	/			/							
98	99							←	/			/							
99	100							←	/			/							
100	101							←	/			/							
101	102							←	/			/							
102	103							←	/			/							
103	104							←	/			/							
104	105							←	/			/							
105	106							←	/			/							
106	107							←	/			/							
107	108							←	/			/							
108	109							←	/			/							
109	110							←	/			/							
110	111							←	/			/							
111	112							←	/			/							
112	113							←	/			/							
113	114							←	/			/							
114	115							←	/			/							
115	116							←	/			/							
116	117							←	/			/							
117	118							←	/			/							
118	119							←	/			/							
119	120							←	/			/							

Samples

#	From	To	#	From	To
62	94 m	95 m.	69	101	102
		96			103
		97			104
		98	72	104 m	105 m.
		99			
		100			
68	100 m	101 m			

Massive
Pervasive
Disseminate
Narrow vein

[illegible]

[illegible]